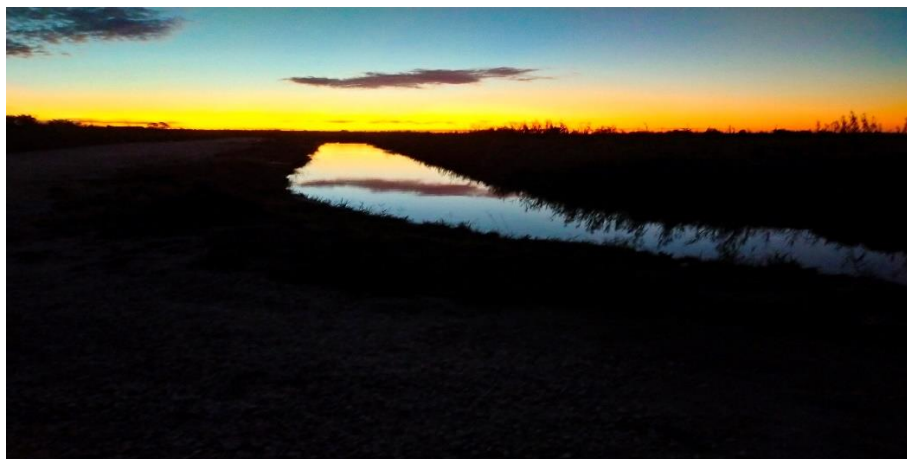


Fishing in Alicante Province and Comunidad de Murcia



We have attempted to put into a single booklet the majority of venues that we know about in these two areas. Undoubtedly there will be other places you can fish; indeed, we believe that anywhere you can access the Rio Segura as it passes through these regions, you can fish. The local canals and drains also contain fish as do some of the 'depositos', the large water storage ponds usually associated with farms and orchards. It may be possible to fish these if permission is granted (see El Bosque Animado).

The quality of fishing is very variable, both between venues and within a venue depending on time of year and water levels. There are some good days fishing to be had at most of the places included but at some, no matter how good you are or how hard you try, a couple of fish may be all you will manage. However, in most cases, the spectacular scenery and wildlife compensates a lot for the lack of bites.

Please bear in mind that the appropriate fishing licence for the area is required. In Murcia these can be obtained from many of the larger town halls, you must have personal liability insurance (for fishing only, not the combined fishing and hunting insurance) when getting your licence. In Alicante you need to go to the Servicio Territorial de Medio Ambiente, Alicante. This is at Calle Profesor Manuel Sala, 4, an appointment is necessary. Alternatively, see if one of the local tackle shops will get one for you. Three local ones are:

EURO PESCA 2000 - Avenida De Los Palacios Formentera [Rojales].

TORRE PESCA - Playa del Acequion Torrevieja [by the beach].

NTT Baits and Tackle - Torrevieja

The various local clubs may also be able to help, certainly with renewing the Alicante licence.

In addition, as in most of Spain, there are local fishing Federations. Joining this gives you greater freedoms with your fishing. For example, you are not permitted to use ground bait when fishing in Murcia unless you are a member of the Murcian Federation. Inspections and checks are common in Murcia and non-federated anglers have been fined for using ground bait. Also, as far as we can find out, the use of keepnets is prohibited except in organised matches.

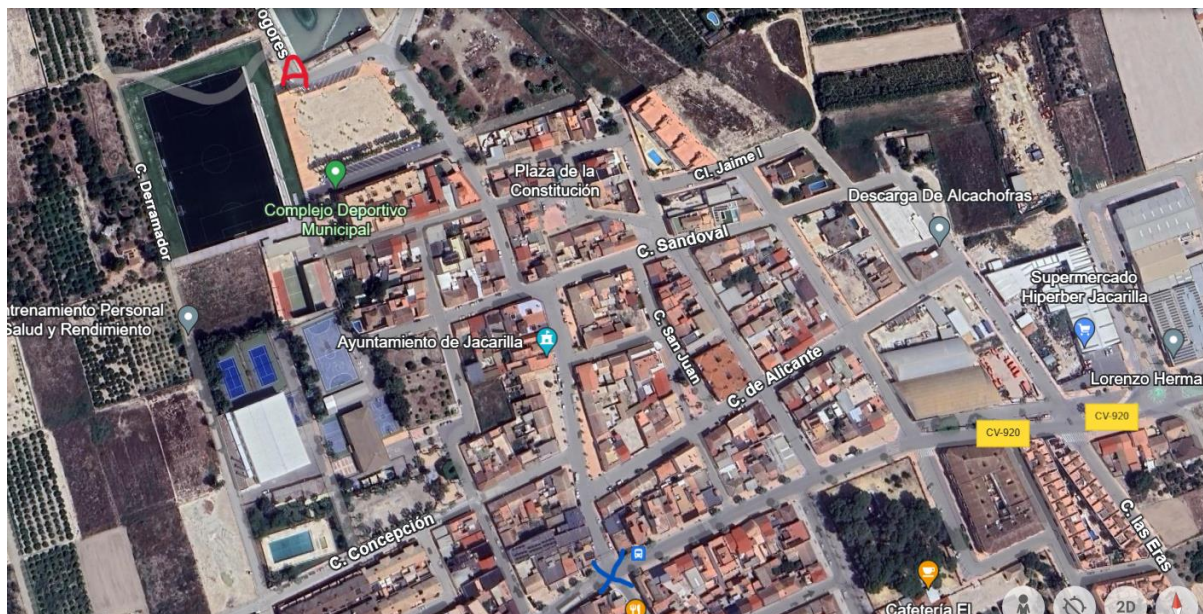
For each venue there is a brief description of how to get there and in most cases a map, GPS coordinates are also included. There will be, in some cases, a brief guide to tactics and bait usually used, but safe to say, that most methods and baits will give some degree of success, depending on the time of year. There are a limited range of species to be caught and these are mainly barbel, carp, carrasio and bleak. Closer to the sea, mullet and bass may be caught. Be aware that on many stretches terrapins and blue crabs are a problem, be particularly careful when you catch these as the crabs have very sharp pincers and the terrapins a nasty bite and sharp claws.

Finally, several of the venues listed on the lower Segura are only available, and kept available, by the hard work of a few individuals. Please, if you see announced that some clearing work is going to take place and you free, go along and help keep these venues open. Alternatively, each time you fish one of these venues, take some loppers or other cutting implement and just spend teen minutes cutting back the vegetation.

We hope you find this guide useful and helps you discover some new places. Many feature in the excellent series on YouTube, 'Match Fishing in Spain' by Ian Brown

Alicante Province

Rio Segura – Bigastro/Jacarilla



Map 1



Map 2

There is one main street through Jacarilla. When coming from Bigastro turn left at the traffic lights or if from Benejuzar turn right (blue cross on Map 1). There is only one set of lights and there is a bar on the corner. Follow the road, Calle Duque de Cubas, past the town hall then do a left and right on to Calle Togores. Pass the sports field (A on the Map 1 and Map 2).

Keep following this, past some greenhouses on the left, past a sharp turn on the right (this leads to the river but is very rough) until you see a ruined house. Turn right near here and follow the road to the river. There are three available stretches, marked in blue letters.

A is the main match stretch and is about the widest, deepest stretch and normally around a dozen pegs are kept open here. Often, opposite the pegs is a far bank feature to fish to with a pole. The stretch contains carp, carrasio, barbel and bleak. The odd gudgeon has been caught (and positively identified as such, not small barbel) and in the warmer months, terrapins are a nuisance. Carp to 9 kilograms have been caught in this section, though most are around the 1-2 kilogram mark.

B is a stretch that has been used occasionally for matches. A few pegs are open, but it takes very little effort to make a peg anywhere on the stretch. Here the river is narrower, shallower and faster than the main match stretch. Good barbel and carp have been taken from this stretch.

C is only used for pleasure fishing and is not part of the main river but is the Arzarbe Mayor. The banks are very rocky, and care should be taken if fishing here. Again, good carp and barbel have been reported.

Alternative access route

An alternative access is near Bigastro. Off the Bigastro-Orihuela road (CV95). Leave Bigastro on this road until you get to the Fiat garage. Turn right onto the track that runs alongside the river (actually the Azarbe Mayor at this point) and follow this for some distance. This is stretch **C** on Map 2, passing a bridge on the left (which gives access to stretch **B**) until it rejoins the main river. Stretch **A** is just after the bridge round the curve in the road.

SatNav Co-ordinates

Stretch A	38° 04' 28" N	00° 52' 43" W
Stretch B	38° 04' 31" N	00° 53' 05" W
Stretch A	38° 04' 24" N	00° 53' 24" W

Rio Segura – Benejuzar



This stretch has only recently been noticed and appears to hold promise. It is about three or four kilometres downstream of the Jacarilla /Bigastro stretches and barbel up to a kilo and carp to two or three kilo have been caught here. Access is by the road bridge over the river in Benejuzar. If arriving from the CV91 turn right just before the bridge (onto the road alongside the river, not the road that goes past the houses). If arriving by passing through Bigastro and Jacarilla, turn left at the island signed Almoradí and Hospital, cross the river and turn immediately left along the side of the river.

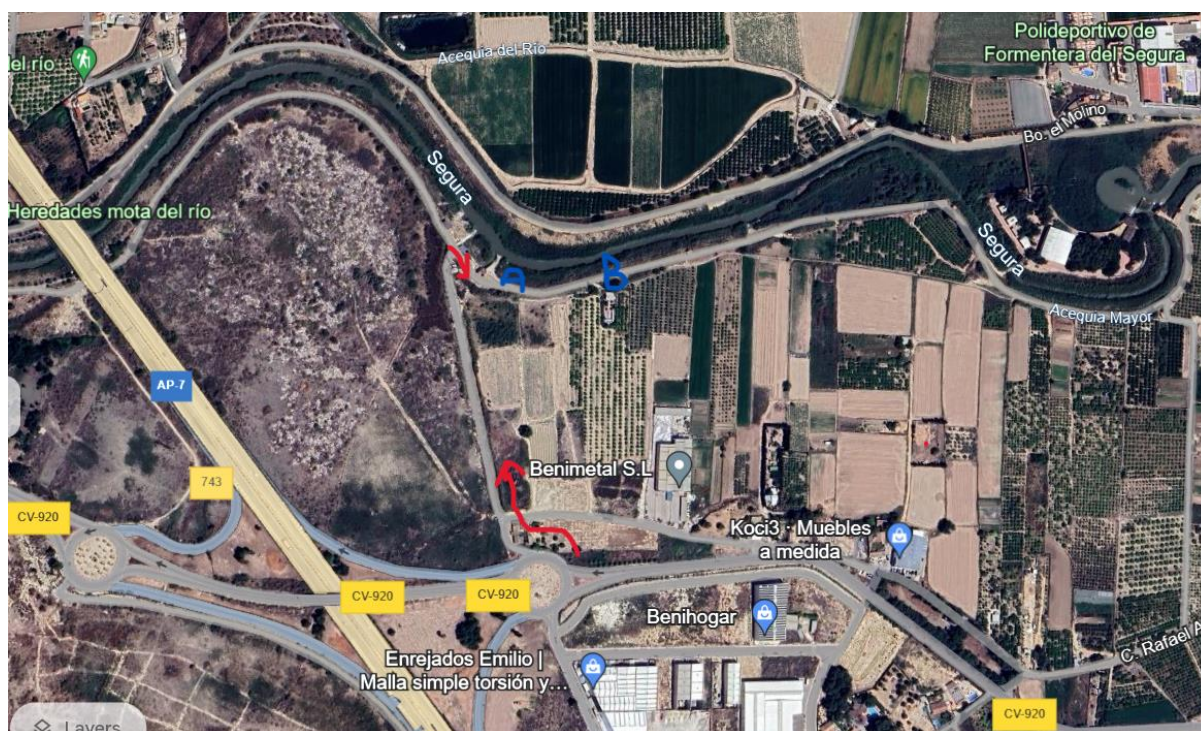
Continue along the track for about 300-400 metres. The banks are fairly clear down to the river and whilst there are a few pegs already cut, the reeds growth is not too heavy, and a peg could be cut more or less anywhere in a very short time.

SatNav Co-ordinates

38° 05' 02" N

00° 50' 31" W

Rio Segura – Pump House/Old Benijofar Match Stretch



These stretches can be accessed from Benijofar, but the most straightforward way is from the AP7 islands for Junction 743. From these islands take the Algorfa/Benijofar road towards Benijofar. Go round the island on the Benijofar side of the motorway as if heading back to the motorway and just before you would rejoin the motorway, take the camino road. Follow this to the river and turn right. Almost immediately there is a concreted slope down to the river where there are normally a few pegs (A – known as the Pump House). Carry on a couple of hundred metres and you will find another slope down to the river. This used to be the match stretch but there are now only two or three pegs available (B).

SatNav Co-ordinates

Pump house	38° 04' 57.1" N	00° 45' 24.6" W
Match stretch	38° 04' 58.3" N	00° 45' 13.4" W

Rio Segura – Consum (Benimar) Rojas

Park in the road behind Consum, C/ Malecon Diputacion de Alicante, and there is a path that runs alongside the river. There are usually a few pegs available here although the reeds grow very quickly, and they may not always be visible at first glance.

SatNav Co-ordinates

38° 05' 06" N	00° 44' 02" W
---------------	---------------

Rio Segura – Eden 1

This used to be one of the most popular stretches for matches with over twenty pegs available. Sadly, over time, lack of maintenance by the local council meant that the reeds on both banks became a problem that could no longer be controlled, and the stretch was eventually abandoned for matches. However, in 2022 and 2023 various work took place to remove reeds and attempt to re-introduce native fauna. As a result, for long stretches, the banks are fairly clear and it might, with care, be possible to fish in places, being careful not to damage any saplings (as of March 2024). Certainly, the old pegs 1 and 2 at the upstream end of the venue are usually clear and fishable with minimal effort to remove the odd overhanging reed.

Access from N332

From Alicante direction go along the N332 until you see a sign for the AP7 Cartagena, leave the N332 at this exit following the signs for the CV91 – Rojas, AP7 Crevillent, A7-Cartagena. You come to an island, do not go up the CV91 but go around the island to the next exit which is a small access road. At the T-junction at the bottom turn right and follow this road until you reach the STOP sign. Go across the road and up a short slope then turn left along the side of the river.

From Torrevieja direction go along the N332 until you see a sign for the AP7 Crevillent Cartagena, CV91 Orihuela. Leave the N332 at this exit and at the island go all the way round to the exit signed CV91 Rojas Orihuela, A7 Crevillent. You come to another island, do not go up the CV91 but go around the island to the next exit which is a small access road. At the T-junction at the bottom turn right and follow this road until you reach the STOP sign. Go across the road and up a short slope then turn left along the side of the river.

Access from AP7

Leave the AP7 at junction 740 Almoradí, Rojas, Guardamar the follow the CV91 towards Guardamar. Keep going along the CV91 until you reach an island with signs to Alicante, Guardamar; Torrevieja, Cartagena. At this island take the first exit, a small slip road. follow this Road until you reach the STOP sign. Go across the road and up a short slope then turn left along the side of the river.



SatNav Co-ordinates 38° 05' 39.7" N 00° 40' 32.6" W

Rio Segura – Eden 2 and Eden 3

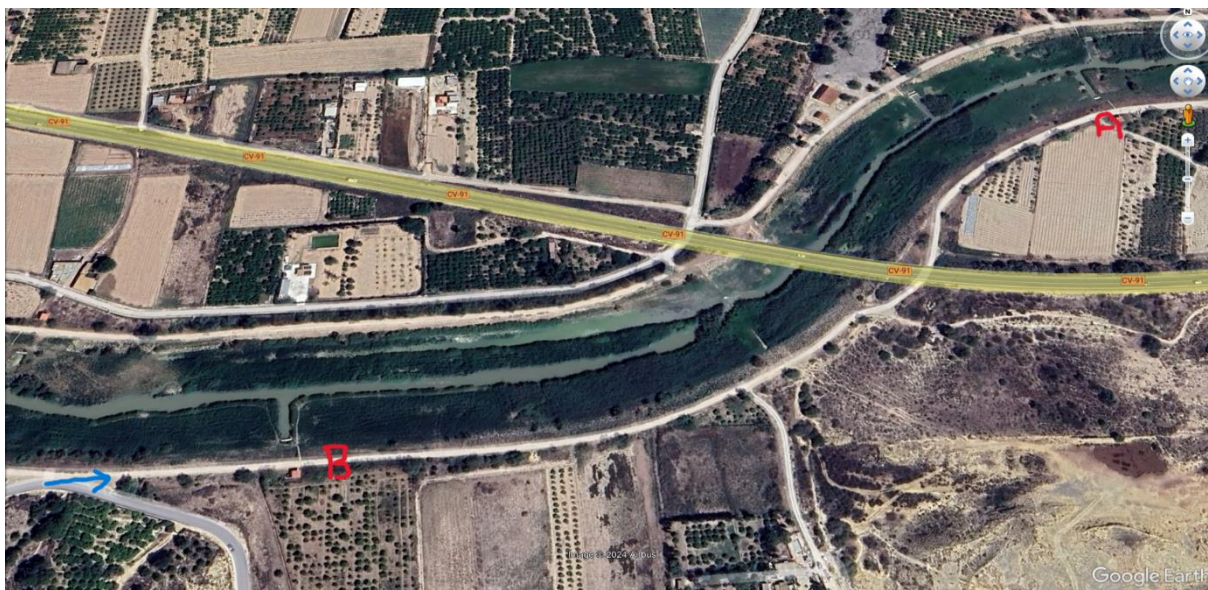
These two stretches of the Segura provide much easier access to the river with steps down to the flood plain from the road. Sport can be good, but this part of the river is subject to wildly fluctuating levels, and it is not unusual to find the river rise or fall up to 50cms during a four or five hour session. In general, it has been found that the sport is best when the river is high with a good flow, when it is low and almost stationary, fishing is tough. The main species are carp, bleak, mullet and barbel with the barbel often in the faster water and carp along the slower margins.

The stretches can be access following the same routes as for Eden 1 but at the STOP sign near the road bridge turn right under the bridge and left along the road before the bridge across the river. Drive around 100m to a small pump house for access to the river via the steps. This is Eden 2 (A on map) and as of March 2024 there are 8-10 pegs available.

For Eden 3 (B on map), continue along the road and under the CV91 bridge. After another 300-400m there is another small pump house with steps down to the river. Although nor easily visible due to the amount of reeds, there are normally 5-6 pegs down stream of the inlet and often 3-4 upstream.

Alternative access is possible from Rojales by taking the Rojales to Guardamar road past La Marquesa Golf Club. Follow this road and you will see it comes quite close to the dirt road at one point. Go past this to the second point where the two roads are adjacent, turn off the main road and turn right alongside the river to the pump house (see blue arrow on map)

The venues are prone to having lying water in the fields between the road and the river especially after rain. However, the path to the pegs, which are slightly higher than the level of the fields, is usually usable if the river itself is not in flood, although the ground might still be soft.



SatNav Co-ordinates

Eden 2	38° 05' 45" N	00° 40' 51" W
Eden 3	38° 05' 36" N	00° 41' 13" W

El Bosquet

El Bosquet is the nearest thing on the Costa Blanca to a UK style commercial fishery. Access from the AP7 is via Junction 730, Catral/Crevillente. If coming from Torrevieja at the island take the road signposted San Felipe Neri. If coming from Alicante/Elche direction, at the first island take Catral/Crevillente turning, cross the motorway and then take the road signposted San Felipe Neri. Go through the village and follow the road for roughly 4.5 kilometres to the entrance to the complex.

Since mid-2020 the complex has been remodelled and now consists of four canal-like sections, although pegs 9 - 16 and 26 - 40 are actually two parts of a long section. Pegs 1a - 7 form the first stretch nearest to the entrance. At the end of this stretch you turn to access the other three sections. Pegs 9 – 16 are the widest and deepest pegs on the complex. Pegs 17 – 25 are accessed by turning left near peg 26, the peg that marks the start of the longest section.

This is a day ticket water, and the fee should be paid at the hut near the entrance before fishing although the owners will come round and collect from you at your peg.

The venue is predominately carp (to 9 kilograms), mullet (to 3 kilograms) and barbel (to 4 kilograms). It was stocked with tench pre-Covid, but these have not been seen for some time.

SatNav Co-ordinates

38° 12' 26" N

00° 46' 24" W

Nancys and Mercadona (Canal del Progrés)

These stretches are accessed from the N332. Proceed along the N332 until you come to an island (with the defunct Nancy's Night Club) with a sign to Alania Camping. Turn down the road that goes to the camp site and at the end is the Rio Segura. The Nancys stretch is part of the main river, and the map coordinates are for the car park. In recent years the river has silted up badly and many pegs have become very shallow.

The Mercadona stretch is actually a canal called Canal del Progrés and it runs from the Segura to the El Hondo nature reserve. The stretch is quite shallow and fast but good catches of carp, mullet and bass can be had.

To get to the Mercadona stretches turn left along the river then left again at the small sign that says Playas then right past the yard usually full of fishing nets. At the end of this road either turn left before the bridge to get to the upstream pegs or cross the bridge and turn left or right for the downstream pegs. Alternatively, continue past the turn-off for Nancys (if coming from Guardamar, if coming in the other direction you will need to go to the island and turn back on yourself), pass a garden centre the after about 50m turn off the N322 on to the road alongside the canal. There are a number of parking places at the side of the track.



SatNav Co-ordinates

Nancys car park 38° 06' 33" N 00° 39' 15" W

Mercadona road access 38° 06' 56" N 00° 39' 25" W

El Bosque Animado

This is a 'deposito' accessed via the restaurant El Bosque Animado. This venue is very close to the N332 near La Mata. There is a large car park in front of the restaurant and access to the water is through the main gates. You MUST pay before you fish and on your first visit you MUST register your licence with the staff. There are around 14 pegs available, eight on each size. As of mid-2021 the cost to fish was 15€, however, this cost can be redeemed against any food or drink you take on that day whilst at the venue.

Please be advised that the primary function of this 'lake' is to provide water to irrigate the orchard below it. As a result, levels may at times be very low and a long-handled landing net is needed. Also, it has a plastic lining so care must be taken not to puncture this.

SatNav Co-ordinates

38° 02' 57" N

00° 39' 24" W

Other venues

The above are the most commonly used venues in the Costa Blanca area. A number of other venues exist but are fished less often, usually because access is not so easy. They are included for completeness. SatNav co-ordinates are given when available.

Embalse de Pedrera

Pedrera featured regularly on match fishing calendars for many years. However, access is now difficult., as is exiting the track onto the road.



Pedrera used to be accessed at the meeting point shown on the map above. However, there is now an island here and a curb blocks access there. There is a point about 20 meters along the road where you can turn in. From there you follow the track over a hump and continue down to the old meeting point marked. Turn right and follow the road to the fishing areas.

Please note, the hump is quite high, and some cars may have difficulty passing it. Exercise particular care when leaving the venue as you will be entering a fairly busy road at a difficult junction.

SatNav Co-ordinates

Turn off by roundabout 38° 00' 53" N 00° 53' 18" W

Embalse de Guadalest

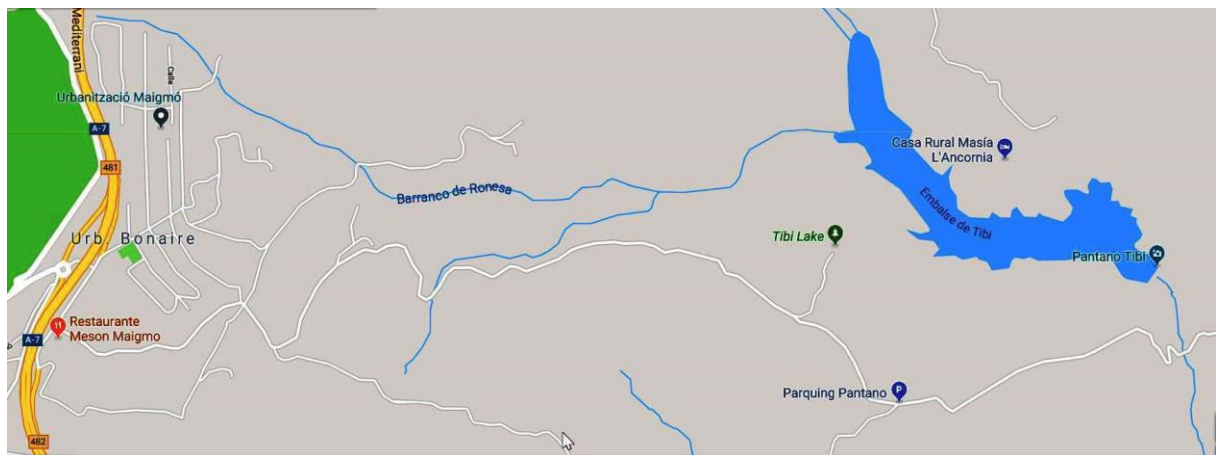
From Benidorm take exit N°65 on the on the AP 7 onto the CV 755 in the direction of La Nuncia and Polop. From here the road is clearly sign posted to Guadalest. 2 km before you reach Guadalest you will see a road bearing to the right and a signpost for pecina publicado in yellow, this will then take you to the dam. The area to fish here will be near to the dam but watch the banks as they can be very steep, main fish is the carp, use the normal baits here. As in all waters in Valencia a Valencian fishing licence is a must.

Embalse de Tibi

The problem with this water is the restricted access, as most of the footpaths are 10 to 12 metres above the water.

Take exit 70 from the A7 on to the Alicante to Alcoy road after some 15km. You will see an exit to Agost. Take this slip road, pass the garage and restaurant and you will see a sign to the Embalse de Tibi. This road will take you as far as you can go, about 5km.

For a second access point take the first exit after the village of Agost. This road will take you to Tibi follow the road straight through the village you will then find a signpost to the Pantano de Tibi 4km. The road ends at an old derelict house, you will find the access here.



SatNav Co-ordinates

West Side	38° 29' 57" N	00° 34' 21" W
Cottage	38° 30' 14" N	00° 33' 45" W

EMBALSE DE AMADORIO.

To get there it is best to take the E15/AP7 toll road [motorway] that runs along the coast. Exit the AP7 at junction 66. At the roundabout take the CV770 to Orxeta, cross over the motorway and after about 5 kilometres you will see the reservoir on your left-hand side.

This is a day ticket water and tickets MUST be booked and paid for before fishing commences. To do this, contact Arnoldo on +34 722 265 146. Its best to do this the day before then collect your ticket from a local bar (which is unlikely to open before 10:00). It is possible to purchase a block of tickets from him which allows earlier access to the water.

Further details will be added when available.

Tickets cost 18€ per day (as at 1st January 2024).

Comunidad de Murcia

Remember, when fishing always make sure you have your Murcia licence and insurance with you plus proof of ID, checking occurs regularly, especially at Argos. Keepnets and the use of ground bait ARE NOT permitted except in approved Murcia Federation matches.

MURCIA TOWN CENTRE



For matches the club uses the far down stream stretch in the centre of Murcia. Access is via a slope off a piece of waste ground on the RM300 (which may be labelled Ave. de la Azacaya or Ave, Región de Murcia). Directions will vary depending on where you start so it might be best to google the location of Carrefour, Avenida Lope de Vega. The waste ground is the other side of the dual carriageway opposite McDonalds.

There are carp, barbel and thousands of bleak, and these can be a pest if you use maggots. Bread, worms, wafers and pellets offer an alternative. Occasionally large zander have been caught on this stretch.

SatNav Co-ordinates

Car park by slope 37° 58' 57" N 01° 06' 42" W

EMBALSE DE ARGOS.

This water holds a mixed head of mirror and common carp up to about five kilograms, but most are in the range of one to two kilograms. It also holds a good stock of barbel that are in the same size range and now some small black bass. The water level can vary at different times of the year so reducing the number of swims that may be fishable at any one time.

This venue is one of the Murcian Fishing Federations main match venues and notice must be taken of any signs that are displayed of any forthcoming matches in the next week, and if an area is flagged and pegged no one else may fish in that area that day.

The venue is mainly fished using feeder tactics, be this cage, method or slow sinking. Pellet waggler and pole have also been successful at times. Best baits to use are a choice from corn, paste, pellets, wafers, worms, maggot, hemp and bread in its many forms.

How to get there?

Find the main motorway the E15/A7 to Murcia. Just past the football stadium you turn off the motorway and join the A30 to Albacete exit 362A. Following this road for about 35 minutes or about 55 Kilometres, you will come to a turning marked Calasparra. Go down it and after a kilometre you will come to a garage and restaurant turn left here and follow the road to Calasparra. Pass Calasparra and then after about 5 Kilometres you will arrive at a restaurant called Don Gomes IV, just past this you will see a side road on the left-hand side, turn down this road, cross the crossroads and you will find the Embalse in front of you.

Alternatively take the AP7 or N332 towards San Javier then the RM19 towards Balsicas/Murcia. Join the A30 and carry on this to Exit 151 and take the MU31 to Alcantarilla and the MU30. Continue past Alcantarilla then take RM15/C415 towards Mula. Keep going on this road for about 50k then just after Cehegin take exit 57 towards RM-B-36 and Moratalla (RM714). Keep on the RM714 and just after passing Hotel Argos and a petrol station you will see a side road on the right-hand side, turn down this road, cross the crossroads and you will find the Embalse in front of you.

SatNav co-ordinates

38° 10' 15.4" N

1° 44' 25.0" W

EMBALSE DEL JUDIO.

To find this Embalse from Rojales get on to the A7/E15 to Murcia. Leave the A7 at the junction for Albacete and Cieza the A 30. Drive up past Blanca and just past Cieza you turn off the A30 on to the C330 to Mula and Cieza at the end of the slip road you will come to a roundabout take the 3rd exit and drive along part of the old C301 for approx. 800 metres. You will see on your right a sign to the Embalse [Prensa].

Follow this road until you reach a set of green gates, pass through and bear to the left cross the dam and park there is a 100 metre walk down the ramp here, you may not fish within 50 metres of the dam, and we informed that this was the only side that we could fish. At the time of our visit here the water was very low. This reservoir is not very big and only carp and barbel are reported to be here. The setting is very nice, but it was extremely hot when we visited. The access to the water is not easy and on the whole is probably not worth the effort of a visit.

EMBALSE ALFONSO XIII (Embalse de Quipar)

The water holds a strong head of fish that includes both common and mirror carp, black bass, bleak and barbel. All the normal baits apply here to catch fish, as well as the styles of fishing that you chose to use.

This water has been developed over the years for recreational purposes and you will find some areas closed to fishing at various times of the year.

One of the ways to get there, and probably the best, is to take the A7/E15 motorway. Just past Murcia you will come across a signpost for the C415 to Mula and Caravaca de la Cruz- take this road. At junction N^o 33 you turn off and take the road to Cieza. This is numbered C330, after some distance take the first turning on your left this is marked MU 552 to Calasparra. Travel along this road for approximately 18 kilometres, until you come to a sign saying to the Embalse. Turn right here and travel down this road for about 4K, you will then find a gravel road on the right-hand side. Turn down this track. bear to your left and follow the road down to the water.

You can also reach this water from the opposite direction. Follow the directions to the Embalse de Carcabo then carry on to the Embalse de Alfonso XIII.

SatNav co-ordinates

38° 13' 06.8" N 1° 36' 47.1" W